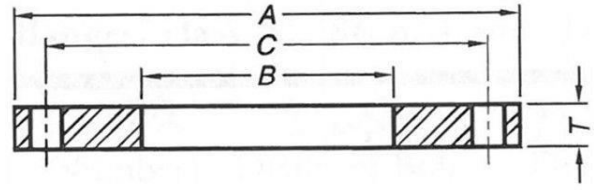
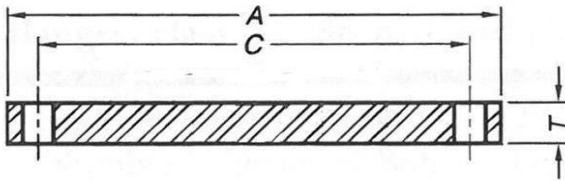


**TABLE 2 AWWA C207 CLASS B RING & BLIND FLANGES**



Nominal Pipe Size	O.D. Flange	Thickness		Bore	Drilling			Approx. Weight per Piece (LBS)	
		Slip On	Blind		Diam. of Bolt Circle	Diam. of Bolt Holes	Number of Bolts Holes	Slip On	Blind
NPS	A	T	T	B	C				
4	9	0.625	0.625	4.57	7.5	0.75	8	8	11
5	10	0.625	0.625	5.66	8.5	0.875	8	9	14
6	11	0.688	0.688	6.72	9.5	0.875	8	11	19
8	13.5	0.688	0.688	8.72	11.75	0.875	8	15	28
10	16	0.688	0.688	10.88	14.25	1	12	19	39
12	19	0.688	0.719	12.88	17	1	12	28	58
14	21	0.688	0.791	14.19	18.75	1.125	12	34	78
16	23.5	0.688	0.892	16.19	21.25	1.125	16	41	110
18	25	0.688	0.95	18.19	22.75	1.25	16	41	132
20	27.5	0.688	1.04	20.19	25	1.25	20	49	175
22	29.5	0.75	1.132	22.19	27.25	1.375	20	57	219
24	32	0.75	1.216	24.19	29.5	1.375	20	67	277
26	34.25	0.812	1.307	26.19	31.75	1.375	24	80	341
28	36.5	0.875	1.398	28.19	34	1.375	28	94	414
30	38.75	0.875	1.477	30.19	36	1.375	28	105	493
32	41.75	0.936	1.581	32.19	38.5	1.625	28	132	613
34	43.75	0.938	1.661	34.19	40.5	1.625	32	137	707
36	46	1	1.751	36.19	42.75	1.625	32	161	824
38	48.75	1	1.853	38.19	45.25	1.625	32	185	980
40	50.75	1	1.933	40.19	47.25	1.625	36	193	1108
42	53	1.125	2.023	42.19	49.5	1.625	36	234	1264
44	55.25	1.125	2.114	44.19	51.75	1.625	40	249	1436
46	57.25	1.125	2.194	46.19	53.75	1.625	40	260	1600
48	59.5	1.25	2.285	48.19	56	1.625	44	306	1800
50	61.75	1.25	2.377	50.19	58.25	1.875	44	317	2017

52	64	1.25	2.468	52.19	60.5	1.875	44	339	2249
54	66.25	1.375	2.559	54.19	62.75	1.875	44	397	2499
60	73	1.5	2.82	60.19	69.25	1.875	52	508	3344
66	80	1.625	3.092	66.19	76	1.875	52	664	4403
72	86.5	1.75	3.353	72.19	82.5	1.875	60	802	5582
78	93	2	.....	78.19	89	2.125	64	1000	.....
84	99.75	2	.....	84.19	95.5	2.125	64	1145	.....
90	106.5	2.25	.....	90.19	102	2.438	68	1404	.....
96	113.25	2.25	.....	96.19	108.5	2.438	68	1586	.....
102	120	2.5	.....	102.19	114.5	2.688	72	1912	.....
108	126.75	2.5	.....	108.19	120.75	2.688	72	2136	.....
114	133.5	2.75	.....	114.19	126.75	2.938	76	2525	.....
120	140.25	2.75	.....	120.19	132.75	2.938	76	2795	.....
126	147	3	.....	126.19	139.25	3.188	80	3252	.....
132	153.75	3	.....	132.19	145.75	3.188	80	3572	.....
138	160.5	3.25	.....	138.19	152	3.438	84	4101	.....
144	167.25	3.25	.....	144.19	158.25	3.438	84	4475	.....

**Notes:**

\*Pressure rating at atmospheric temperature is 86 psi. These flanges have the same OD and drilling as ANSI/ASME B16.1 class 125 cast-iron flanges. In sizes 24in. and smaller, they also match ANSI/ASME B16.5 150-psi standard for steel flanges.

Dimensions are in inches. Weights are in pounds.